

- NOTES:**
1. BASE PLAN INFORMATION OBTAINED FROM DRAWING 102748s02-05, SHEET 02 BY D.M. WILLS ASSOCIATES LIMITED, DATED APRIL 30, 2012.
  2. UTILITY INFORMATION IS UNAVAILABLE AT TIME OF DESIGN. ELECTRICAL DISTRIBUTION DESIGN IS SHOWN FOR INFORMATION PURPOSES ONLY.
  3. CONTRACTOR TO COORDINATE WITH CIVIL AND PETERBOROUGH DISTRIBUTION INC. DRAWINGS TO DETERMINE JOINT SERVICES TRENCHING.
  4. PAD MOUNT TRANSFORMERS LOCATIONS ARE PROPOSED ONLY. CONTRACTOR TO COORDINATE WITH PETERBOROUGH DISTRIBUTION INC. ON EXACT LOCATION AND INSTALLATION INSTRUCTIONS.
  5. PROVIDE CONDUIT FOR BELL AND CABLE TV. REFER TO BELL AND CABLE TV DRAWINGS FOR EXACT LOCATIONS AND REQUIREMENTS.
  6. ENSURE THAT ALL METAL STRUCTURES LOCATED WITHIN 2.4m (8'-0") OF PADMOUNT TRANSFORMER ARE BONDED AS PER BULLETIN 36-10-07.
  7. LIGHTING POLES SHALL BE INSTALLED A MINIMUM OF 1.5 METERS FROM TRANSFORMERS.
  8. CONTRACTOR SHALL OBTAIN LATEST VERSION OF STANDARD DETAILS AND SPECIFICATIONS FROM PETERBOROUGH DISTRIBUTION INC. AND SHALL ENSURE INSTALLATION COMPLIES WITH REQUIREMENTS.
  9. MINIMUM DETAILS TO OBTAIN WOULD INCLUDE TRANSFORMER VAULT, GROUNDING AND PRIMARY TRENCH.
  10. CONTRACTOR RESPONSIBLE TO PROVIDE ALL TRENCHING AND CIVIL WORKS, FULL CONDS FOR PRIMARY SYSTEM.
  11. TRANSFORMER, PRIMARY SWITCHING UNIT, PRIMARY CABLE AND TERMINATIONS ARE SUPPLIED AND INSTALLED BY P.O.I.
  12. ADDITIONAL BUILDING MOUNTED LIGHTING AT ALL EXITS AND AT PATIO DOORS FOR ALL GROUND LEVEL SUITES WILL BE INCLUDED WITH BUILDING DRAWINGS.

**BELL COMMUNICATION NOTES:**

1. THE DEVELOPER IS HEREBY ADVISED THAT PRIOR TO COMMENCING ANY WORK WITHIN THE PLAN, THE DEVELOPER MUST PROVIDE SUFFICIENT WIRE-LINE COMMUNICATION/TELECOMMUNICATION INFRASTRUCTURE WITHIN THE PROPOSED DEVELOPMENT. THE DEVELOPER MAY BE REQUIRED TO PAY FOR THE CONNECTION TO AND/OR EXTENSION OF THE EXISTING COMMUNICATION/TELECOMMUNICATION INFRASTRUCTURE. IF THE DEVELOPER ELECTS NOT TO PAY FOR SUCH CONNECTION TO AND/OR EXTENSION OF THE EXISTING COMMUNICATION/TELECOMMUNICATION INFRASTRUCTURE, THE DEVELOPER SHALL DEMONSTRATE TO THE MUNICIPALITY THAT SUFFICIENT ALTERNATIVE COMMUNICATION/TELECOMMUNICATION FACILITIES ARE AVAILABLE WITHIN THE PROPOSED DEVELOPMENT TO ENABLE AT A MINIMUM, THE EFFECTIVE DELIVERY OF COMMUNICATION/TELECOMMUNICATION SERVICES FOR EMERGENCY MANAGEMENT SERVICES (i.e., 911 EMERGENCY SERVICES)

2. BELL CANADA REQUIRES ONE OR MORE CONDUIT OR CONDUITS OF SUFFICIENT SIZE FROM EACH UNIT TO THE ROOM(S) IN WHICH THE TELECOMMUNICATION FACILITIES ARE SITUATED AND ONE OR MORE CONDUITS FROM THE ROOM(S) IN WHICH THE TELECOMMUNICATION FACILITIES ARE LOCATED TO THE STREET LINE.

3. DEVELOPER TO PROVIDE 100mm CONDUIT FROM ELECTRICAL UTILITY ROOM OF THE BUILDING TO THE PROPERTY LINE. THE EXACT LOCATION OF THIS CONDUIT TO BE DETERMINED AT A SITE MEETING WITH A BELL ENGINEERING REPRESENTATIVE. CALL 705-876-2057 TO ARRANGE THIS MEETING.

4. A 4' x 4' x 3/4" PLYWOOD BACKBOARD AND ACCESS TO THE COMMON FLOOR GROUND IS REQUIRED IN THE UNIT ROOM. THE COMMON COMMUNICATION WIRING IS THE RESPONSIBILITY OF THE BUILDER.

5. IF THERE ARE ANY CONFLICTS WITH EXISTING BELL CANADA FACILITIES OR EASEMENTS THE OWNER/DEVELOPER SHALL BE RESPONSIBLE FOR RE-ARRANGEMENTS OR RELOCATIONS.

**LIGHTING SCHEDULE**

SYMBOL	DESCRIPTION	MANUFACTURER	MODEL No.
A	100W TYPE IV METAL HALIDE POLE MOUNTED FIXTURE, FULL CUT-OFF, DARK SKY FRIENDLY, 120V, DARK BRONZE IN COLOUR, MOUNTED AT 13'	LITHONIA	MRI-100MH-C-SR4SC-120-SPA-LPI
B	70W TYPE IV METAL HALIDE POLE MOUNTED FIXTURE, FULL CUT-OFF, DARK SKY FRIENDLY, 120V, DARK BRONZE IN COLOUR, MOUNTED AT 9'	LITHONIA	MRI-70MH-C-SR4SC-120-SPA-LPI
C	70W FORWARD THROW METAL HALIDE WALL MOUNTED AT 8'	LITHONIA	MFW-70MH-C-FT-120-LPI

NOT TO BE USED FOR CONSTRUCTION UNLESS SHOWN BY THE ENGINEER.

THIS DRAWING IS AN INSTRUMENT OF PROFESSIONAL SERVICE FOR USE EXCLUSIVELY ON THIS PROJECT. IS PROHIBITED FOR ANY PORTION OF THIS DOCUMENT.

Copyright 2011 Kirkland Engineering Ltd

**KIRKLAND ENGINEERING LTD.**  
 370 Water Street  
 Peterborough, Ontario  
 P. (705) 748-2831  
 F. (705) 741-1536  
 www.kirklandeng.com

---

**PRODUCT**  
**HAZELBRAE PLACE**  
 21 Barnardo Street  
 Peterborough, Ontario

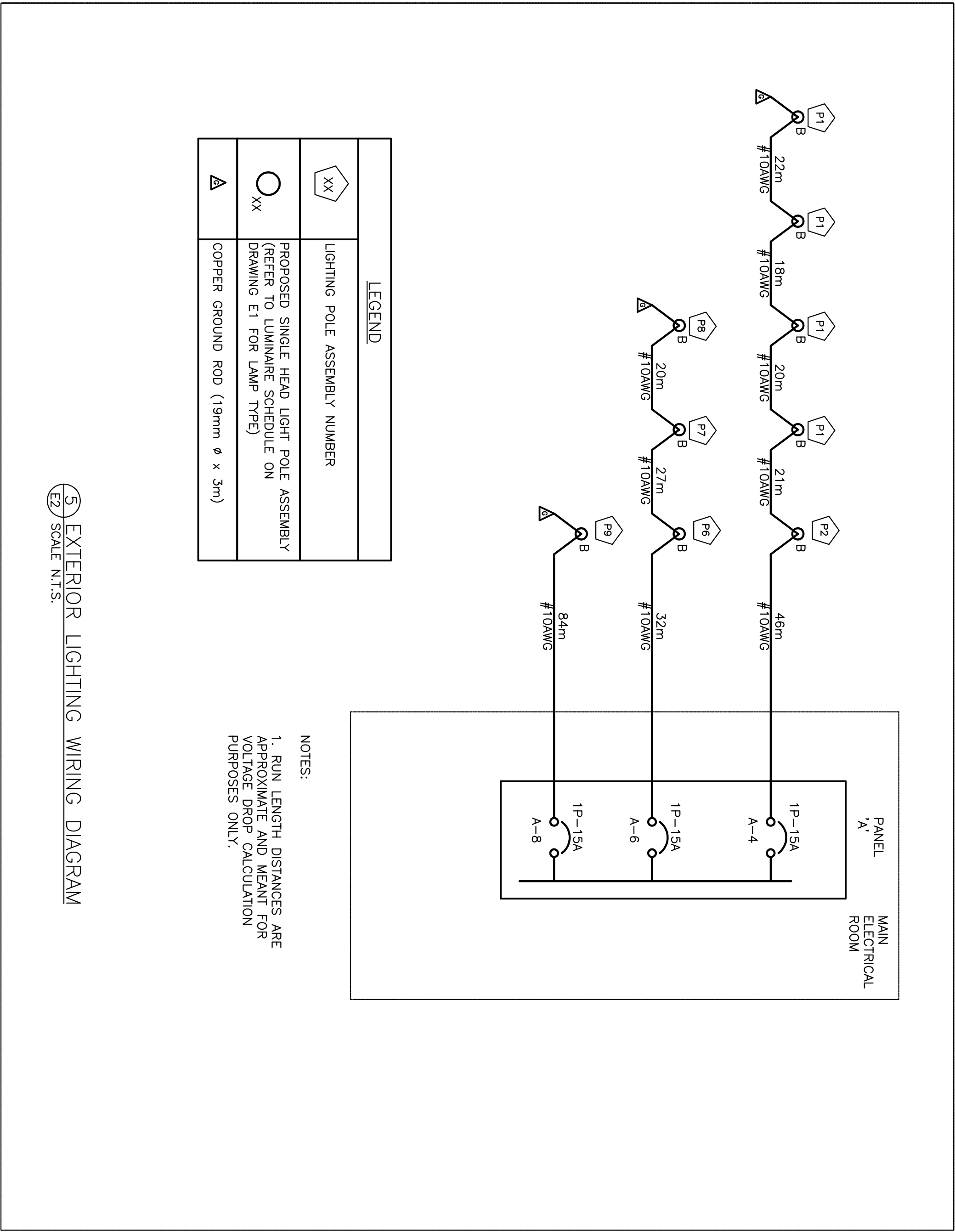
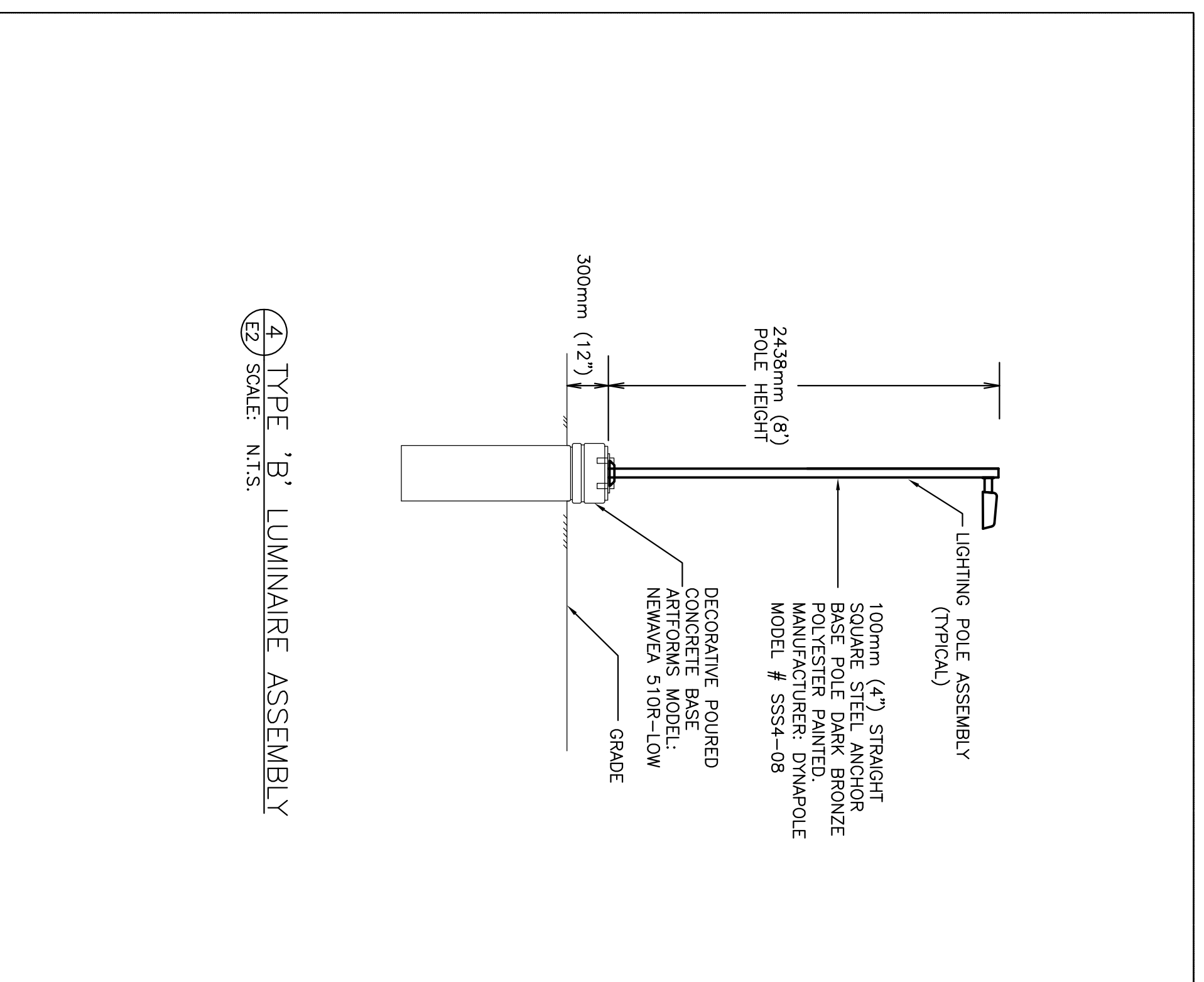
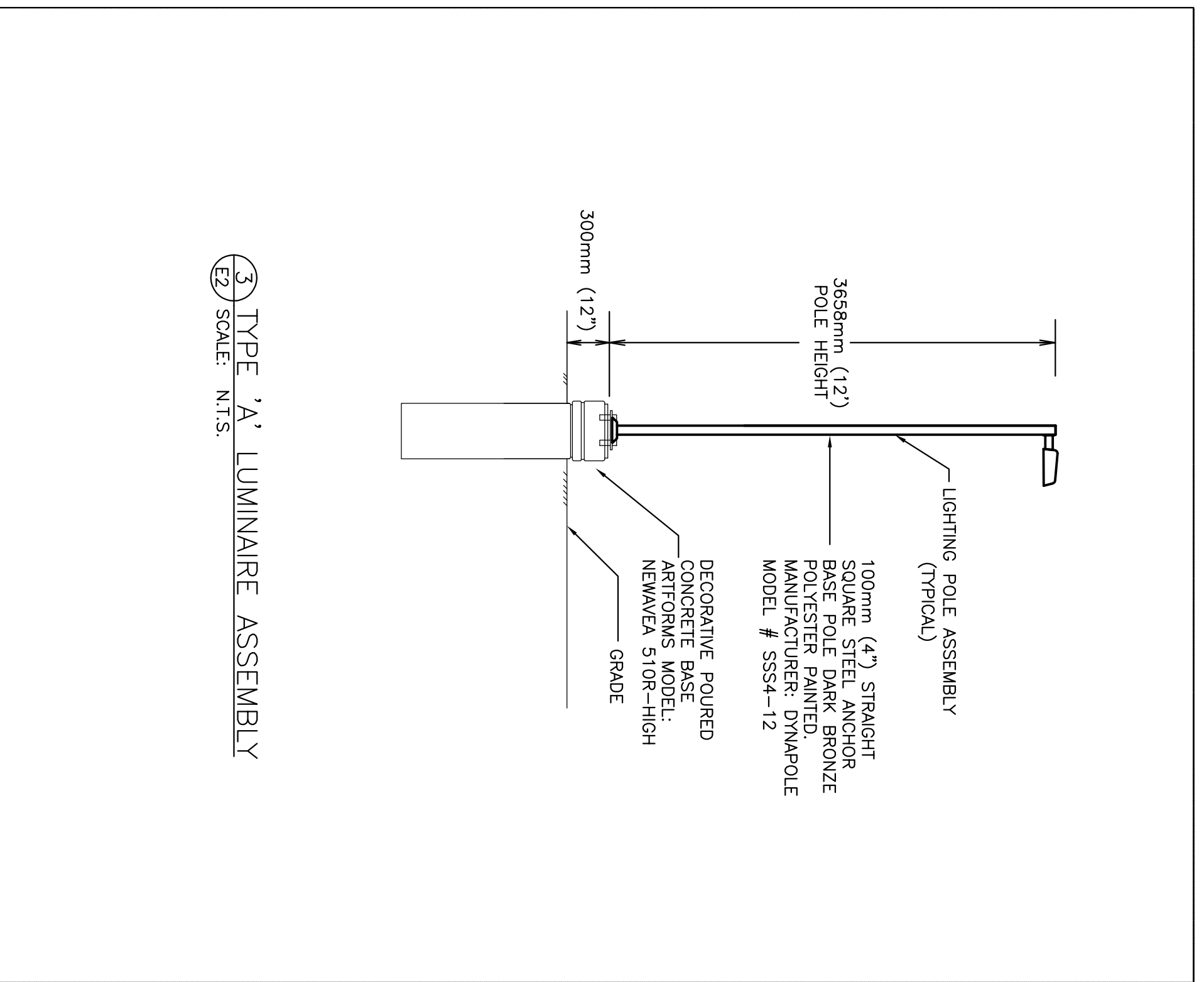
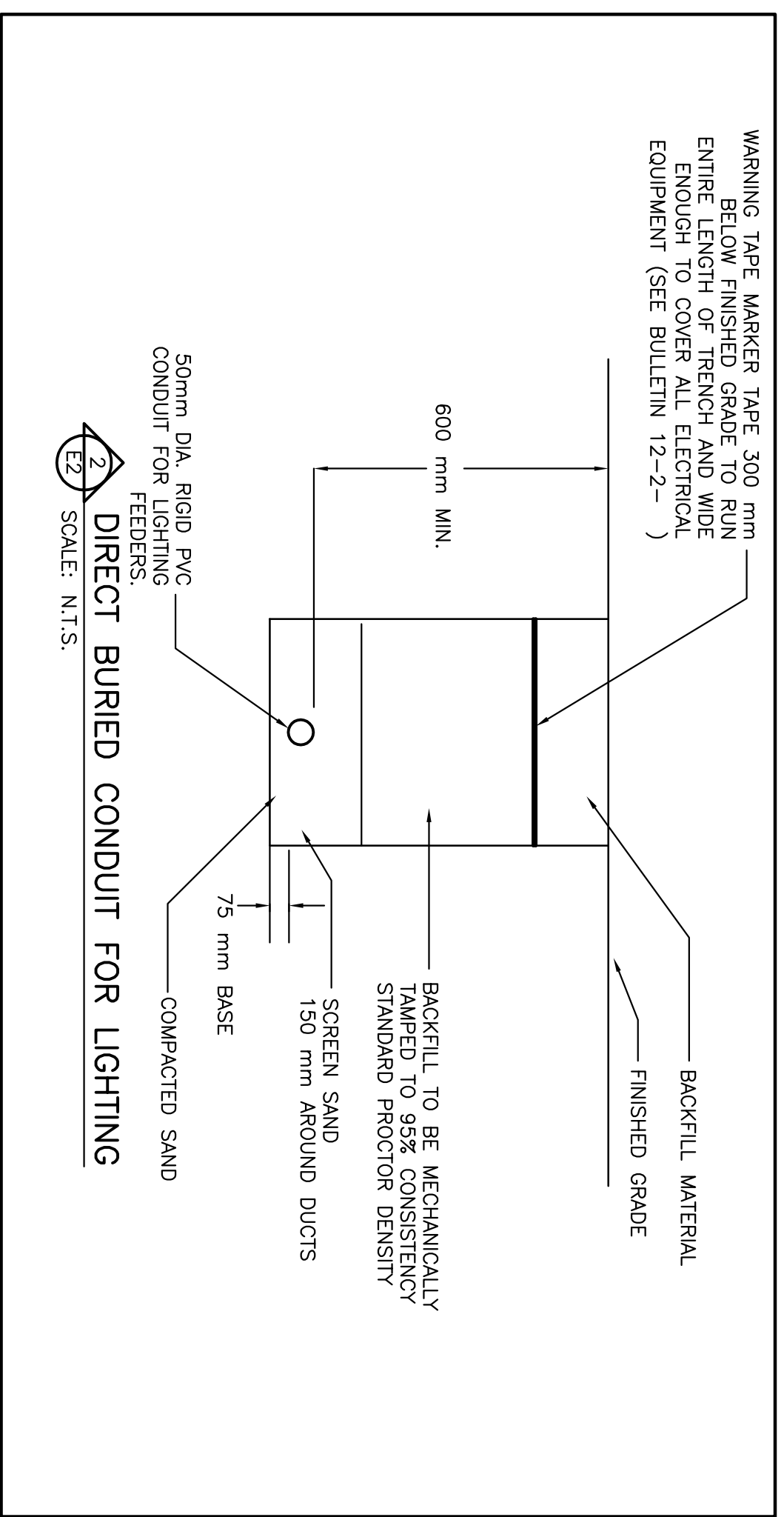
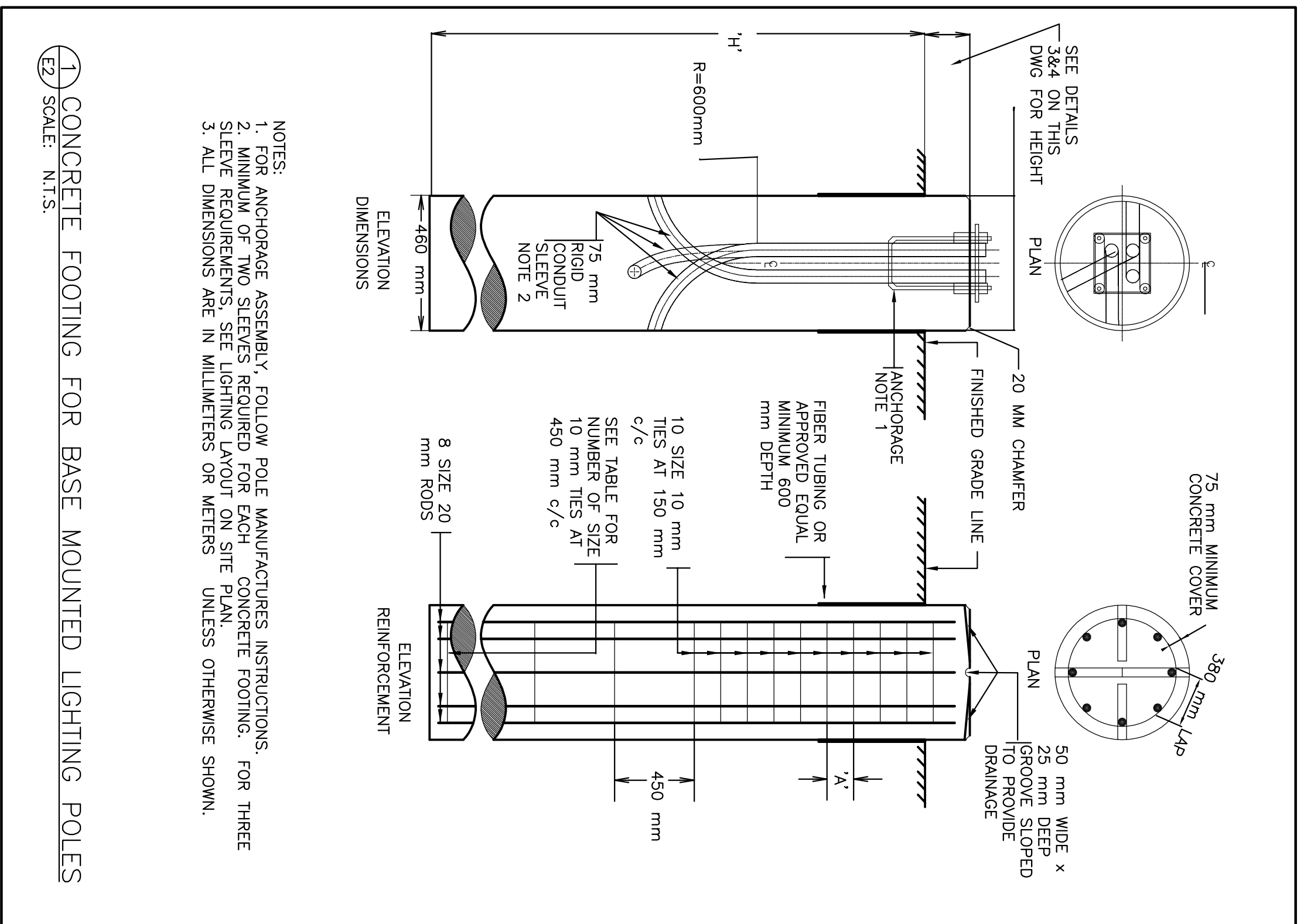
**TITLE**  
**ELECTRICAL SITE PLAN**

DESIGN	DATE	BY	SCALE
DESIGN	AUG 11	HK	1:400
DRAWN	AUG 11	HK	
CHECKED	AUG 11	PGB	
APPROVED	AUG 11	PGB	

PROJECT **4293**

E1

REV. NO. 1



<p>NOT TO BE USED FOR CONSTRUCTION UNLESS SIGNED BY THE ENGINEER.</p> <p>THIS DRAWING IS AN INSTRUMENT OF PROFESSIONAL SERVICE FOR USE EXCLUSIVELY ON THIS PROJECT. IT IS VOID FOR ANY PORTION OF THIS DOCUMENT. PROHIBITED.</p> <p>Copyright 2011 Kirkland Engineering Ltd</p>		<p><b>KIRKLAND ENGINEERING LTD.</b>        Peterborough, Ontario        570 Water Street        Peterborough, Ontario        P. 709 746-5831        F. 709 741-1526        www.kirklandeng.com</p>		
<p>PRODUCT</p> <p><b>HAZELBRAE PLACE</b></p> <p>21 Barnardo Street        Peterborough, Ontario</p>				
<p>TITLE</p> <p><b>SITE PLAN DETAILS</b></p>				
DESIGN	AUG 11	HK	SCALE	N.T.S.
DRAWN	AUG 11	HK	DWG NO.	
CHECKED	AUG 11	PGB		
APPROVED	AUG 11	PGB		
PROJECT	<p><b>4293</b></p>			
<p>REV. NO.</p> <p><b>E2</b></p>		<p>1</p>		
<p>CAD FILE NO. 4293E2</p>				